

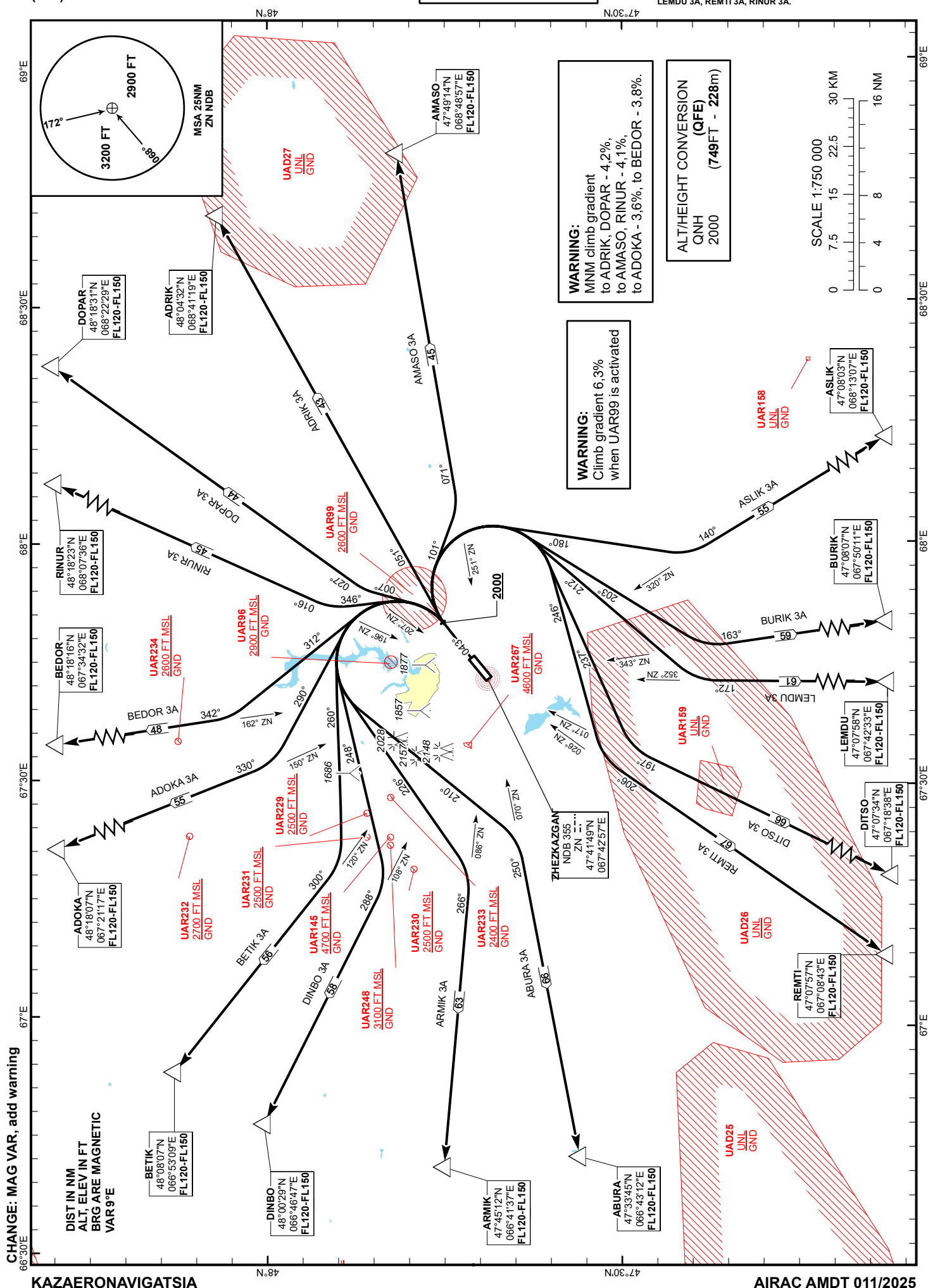
STANDARD DEPARTURE
CHART - INSTRUMENT
(SID) - ICAO

TRANSITION ALTITUDE
10000 FT

ZHEZKAZGAN TOWER 127.1
ZHEZKAZGAN ATIS (EN) 131.4
ZHEZKAZGAN ATIS (RU) 122.4

ABURA 3A, ADOKA 3A, ADRIK 3A,
AMASO 3A, ARMIK 3A, ASLIK 3A,
BEDOR 3A, BETIK 3A, BURIK 3A,
DINBO 3A, DITSO 3A, DOPAR 3A,
LEMDO 3A, REMTI 3A, RINUR 3A.

ZHEZKAZGAN
RWY 04



STANDARD DEPARTURE ROUTES – INSTRUMENT (SID) ZHEZKAZGAN RWY 04	
RINUR 3A After take-off climb straight ahead to 2000 or above. Turn LEFT on track 346° until intercept bearing 196°ZN, then proceed on track 016° to RINUR (N482255 E0681040). Cross RINUR at FL120 - FL150.	REMTI 3A After take-off climb straight ahead to 2000 or above. Turn RIGHT on track 246° until intercept bearing 026°ZN, then proceed on track 206° to REMTI (N470757 E0670843). Cross REMTI at FL120 - FL150.
DOPAR 3A After take-off climb straight ahead to 2000 or above. Turn LEFT on track 007° until intercept bearing 207°ZN, then proceed on track 027° to DOPAR (N481831 E0682229). Cross DOPAR at FL120 - FL150.	ABURA 3A After take-off climb straight ahead to 2000 or above. Turn LEFT on track 210° until intercept bearing 070°ZN, then proceed on track 250° to ABURA (N473345 E0664312). Cross ABURA at FL120 - FL150.
ADRIK 3A After take-off climb straight ahead to 2000 or above. Turn RIGHT on track 051° to ADRIK (N480432 E0684119). Cross ADRIK at FL120 - FL150.	ARMIK 3A After take-off climb straight ahead to 2000 or above. Turn LEFT on track 226° until intercept bearing 086°ZN, then proceed on track 266° to ARMIK (N474512 E0664137). Cross ARMIK at FL120 - FL150.
AMASO 3A After take-off climb straight ahead to 2000 or above. Turn RIGHT on track 101° until intercept bearing 251°ZN, then proceed on track 071° to AMASO (N474914 E0684857). Cross AMASO at FL120 - FL150.	DINBO 3A After take-off climb straight ahead to 2000 or above. Turn LEFT on track 248° until intercept bearing 108°ZN, then proceed on track 288° to DINBO (N480029 E0664647). Cross DINBO at FL120 - FL150.
ASLIK 3A After take-off climb straight ahead to 2000 or above. Turn RIGHT on track 180° until intercept bearing 320°ZN, then proceed on track 140° to ASLIK (N470509 E0681542). Cross ASLIK at FL120 - FL150.	BETIK 3A After take-off climb straight ahead to 2000 or above. Turn LEFT on track 260° until intercept bearing 120°ZN, then proceed on track 300° to BETIK (N480807 E0665309). Cross BETIK at FL120 - FL150.
BURIK 3A After take-off climb straight ahead to 2000 or above. Turn RIGHT on track 203° until intercept bearing 343°ZN, then proceed on track 163° to BURIK (N470012 E0675152). Cross BURIK at FL120 - FL150.	ADOKA 3A After take-off climb straight ahead to 2000 or above. Turn LEFT on track 290° until intercept bearing 150°ZN, then proceed on track 330° to ADOKA (N482224 E0671842). Cross ADOKA at FL120 - FL150.
LEMDU 3A After take-off climb straight ahead to 2000 or above. Turn RIGHT on track 212° until intercept bearing 352°ZN, then proceed on track 172° to LEMDU (N470002 E0674228). Cross LEMDU at FL120 - FL150.	BEDOR 3A After take-off climb straight ahead to 2000 or above. Turn LEFT on track 312° until intercept bearing 162°ZN, then proceed on track 342° to BEDOR (N482529 E0673251). Cross BEDOR at FL120 - FL150.
DITSO 3A After take-off climb straight ahead to 2000 or above. Turn RIGHT on track 237° until intercept bearing 017°ZN, then proceed on track 197° to DITSO (N470443 E0671637). Cross DITSO at FL120 - FL150.	